

G80-ECH - GANCIO PER CONTAINER
G80-ECH - CONTAINER HOOK

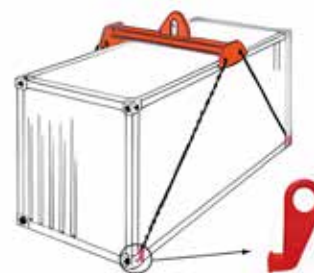
Lega di acciaio legato, temperato e temprato grado 80.
Grade 80 quenched and tempered alloy steel.

Test di prova a 2,5 volte il WLL.
Proof Load tested at 2,5 times the WLL.

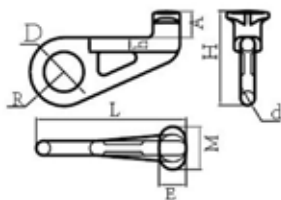
Coefficiente di sicurezza 4:1.
Safety factor 4: 1.

100% magnaflux per rilevare crepe.
100% magnaflux crack detection.

Finitura superficiale: plastificata a polvere, rosso RAL3020.
Surface finish: powder plastified, red RAL3020.

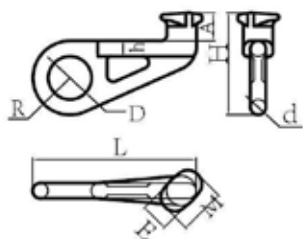


G80-ECH Gancio per container
Container Hook



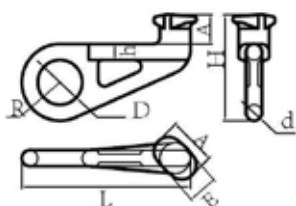
Codice Code	WLL	Peso Weight	A	M	H	h	E	R	D	d	L
	(t)	(kg)	(mm)	(mm)	(mm)	(mm)	(mm)	(mm)	(mm)	(mm)	(mm)
G80ECHS	12,5	4	46	75	166	25	48	60	70	25	265

Diritto / Straight



Codice Code	WLL	Peso Weight	A	M	H	h	E	R	D	d	L
	(t)	(kg)	(mm)	(mm)	(mm)	(mm)	(mm)	(mm)	(mm)	(mm)	(mm)
G80ECHR	12,5	4	46	75	166	25	48	60	70	25	265

45° Destra / Right



Codice Code	WLL	Peso Weight	A	M	H	h	E	R	D	d	L
	(t)	(kg)	(mm)	(mm)	(mm)	(mm)	(mm)	(mm)	(mm)	(mm)	(mm)
G80ECHL	12,5	4	46	75	166	25	48	60	70	25	265

45° Sinistra / Left