

**YC - MORSA PER TRAVI**  
**YC - CLAMP FOR BEAMS**

Morsa progettata per il fissaggio di paranchi su travi in acciaio.

Clamp designed for hoist fixing on steel beams.

Design leggero per una facile maneggevolezza.

Lightweight design for easy handling.

Struttura robusta in acciaio di qualità per impieghi gravosi.

Tough heavy-duty quality steel construction.

Per travi fino a 320 mm.

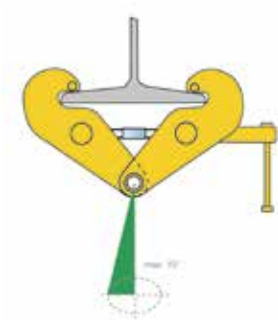
Suitable for beams up to 320 mm.

Portata (WLL) fino a 5 ton.

Working load limit (WLL) up to 5 ton.

Conforme a EN13155.

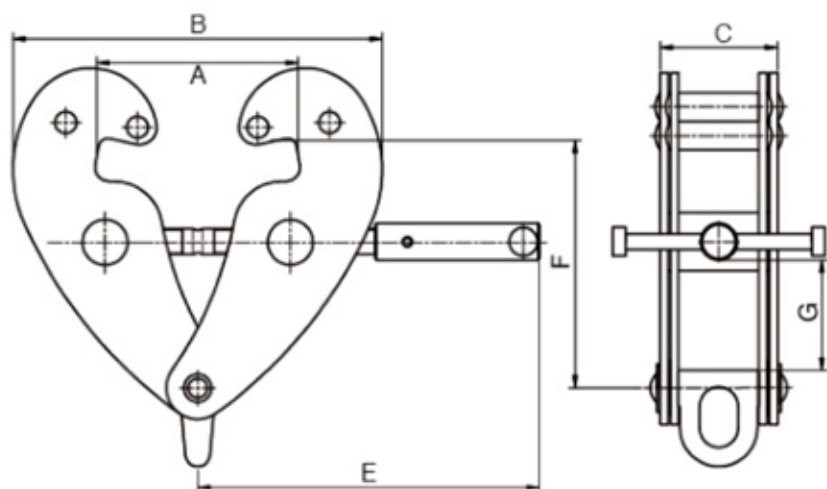
Compliant to EN13155.



Possibilità di applicare il microchip NFC-RFID (Tech for Safety).

Possibility of applying NFC-RFID microchip (Tech for Safety).





Codice Code	WLL	Apertura Open Size	A	B min - max	C	E	F min- max	G	Peso Weight
	(t)	(mm)	(mm)	(mm)	(mm)	(mm)	(mm)	(mm)	(kg)
YC01000	1	75-230	260	180-360	64	215	102-155	25	4
YC02000	2	75-230	290	185-400	85	215	90-165	25	5
YC03000	3	80-320	354	235-490	103	260	140-225	45	9
YC05000	5	80-320	354	235-490	110	260	140-225	45	11